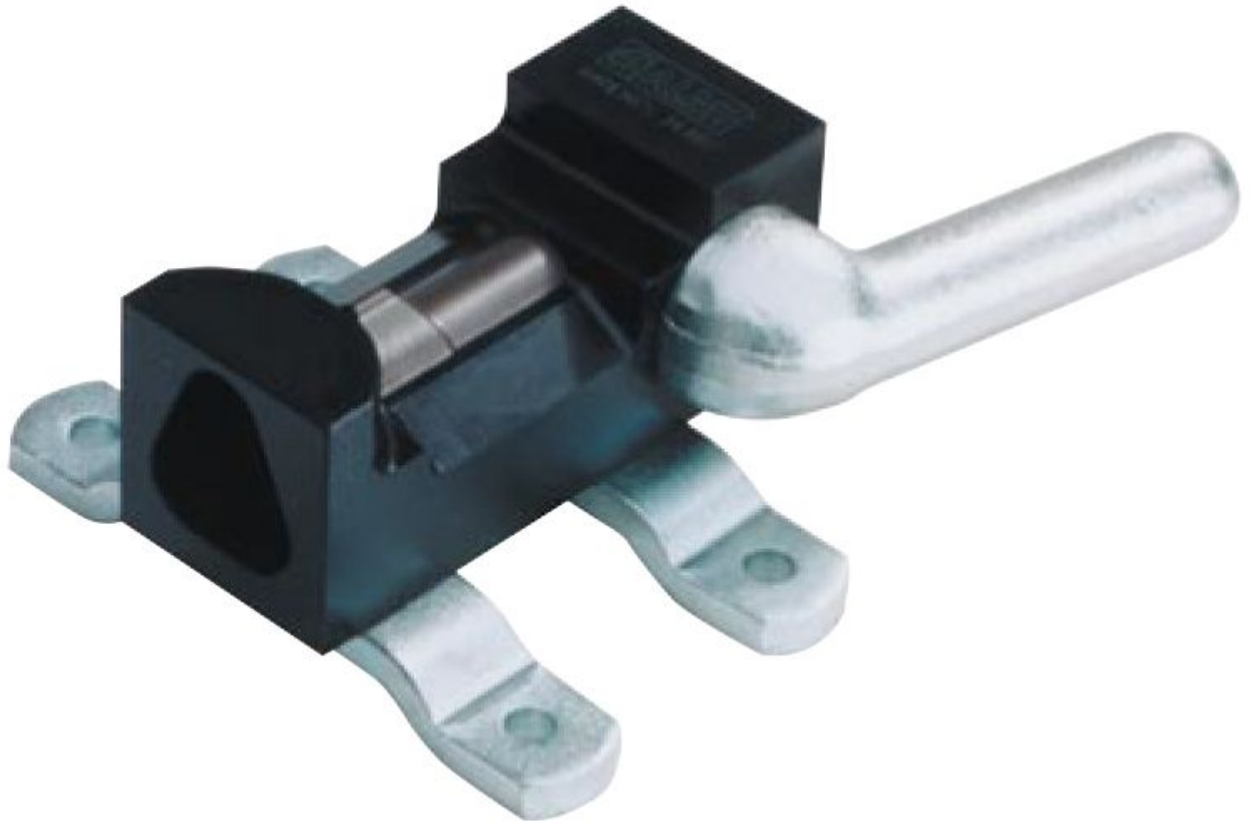


Almi ALU Manual Pipe Notching Machine



Stock Code: 17101

The Almi range of pipe notching machines are manufactured in Holland and provide the perfect solution to notching tubes prior to welding. The AL1, AL2 and AL3 manual notchers are an excellent cost effective solution for 90° joints. The AL1-2E motorised model is ideal for intensive use whilst the AL1-2U incorporates a venting slot notch. Large range, fast notching, perfect fit.

Features

Technical Specification

MODEL	ALU
Capacity mm	-
Angle notch to 60°	NO
Vent notch	YES
Motor kW	-
Length mm	150
Width mm	60
Height mm	60
Weight kg	7