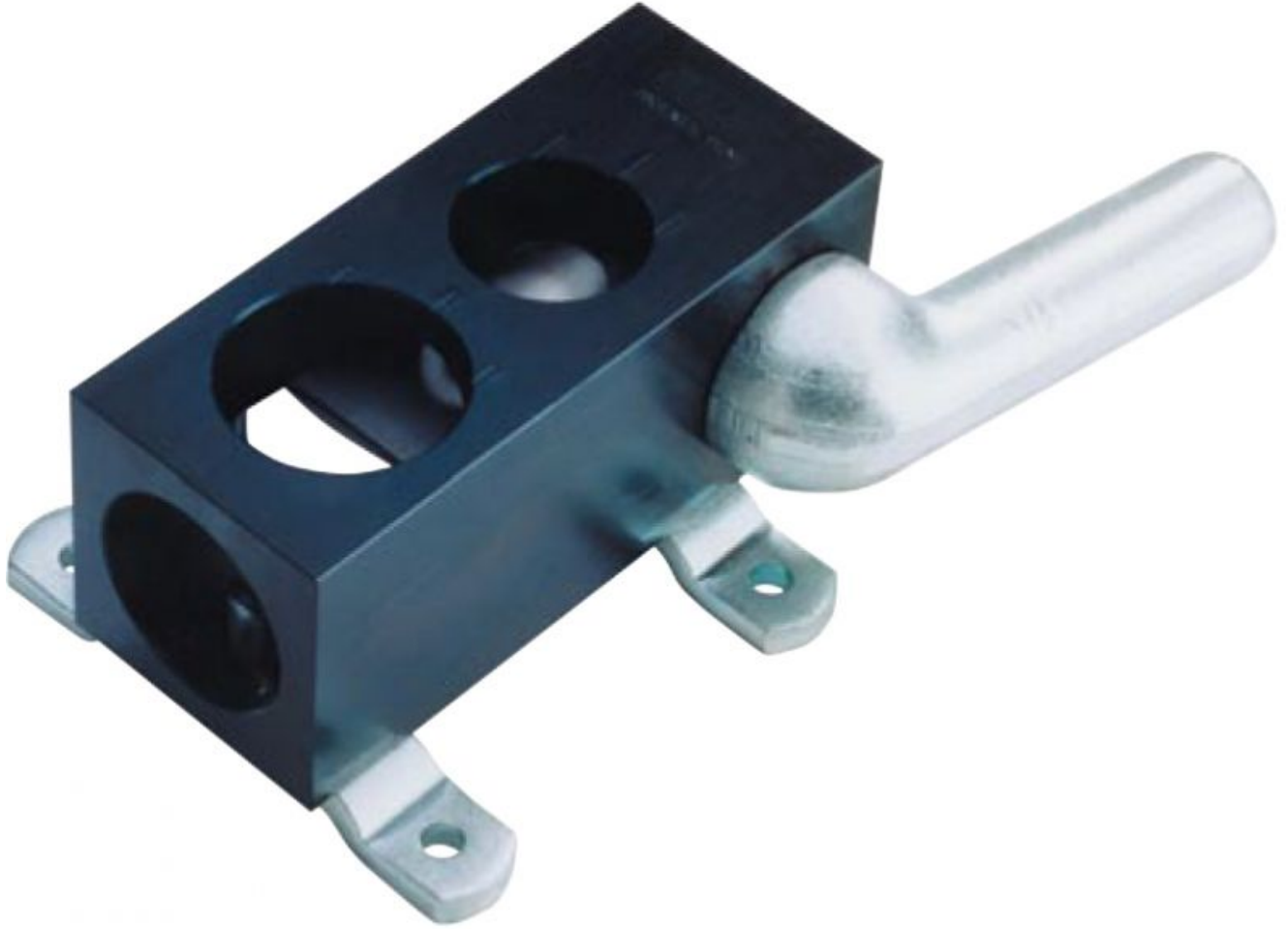


Almi AL3 Manual Pipe Notching Machine



Stock Code: 17100

The Almi range of pipe notching machines are manufactured in Holland and provide the perfect solution to notching tubes prior to welding. The AL1, AL2 and AL3 manual notchers are an excellent cost effective solution for 90° joins. The AL1-2E motorised model is ideal for intensive use whilst the AL1-2U incorporates a venting slot notch. Large range, fast notching, perfect fit.

Features

Technical Specification

MODEL	AL3
Capacity mm	42.8 / 49.0
Angle notch to 60°	NO
Vent notch	NO
Motor kW	-
Length mm	205
Width mm	85
Height mm	85
Weight kg	15